



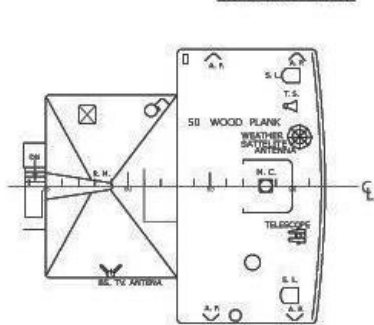
OFFSHORE SOLUTIONS UNLIMITED



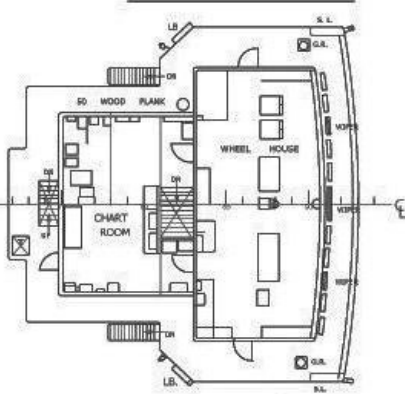
GENERAL INFORMATION	
CLASS TYPE	SPECIAL PURPOSE VESSEL
FLAG/COUNTRY	ST. KITTS AND NEVIS
HULL MATERIAL	STEEL
BUILDER	HAYASHIKANE SHIPBUILDING, JAPAN
YEAR BUILD	JUNE 1978
MAIN ENGINE	KOBE-HATSUDOKI 6 UET45/75C 3,800PS X 1 SET
AUX ENGINE	YANMAR 2 X 6 VAL-UT, 650 KVA , 1 X 6 RAL 250 KVA
BOW THRUSTER	4 TON
PROPELLER	CPP 4 BLADES
SPEED	15 KNOTS (TRIAL); 10.00 KNOTS (SERVICE)
LENGTH (OVER ALL)	81 M
LENGTH (BET PP)	73.5 M
BEAM	13.00 M
DRAFT MAX	6.2 M
GROSS TONNAGE	2,342 TONS
NET TONNAGE	702.00 TONS
SAFETY EQUIPMENT	CLASS AND STATUTORY CERTIFICATES
CLASS	(IRS) INTERNATIONAL REGISTER OF SHIPPING
CONDITION	FULLY OPERATIONAL IN CLASS
VESSEL IS FULLY INSURED WITH P&I AND HULL & MACHINERY INSURANCE	
FUEL CONSUMPTION	
MAIN ENGINE	4, 500 LITERS/DAY SERVICE SPEED
GENERATOR SET	1 GEN – 1, 500 LITERS/DAY
INDURANCE	13,000 NM
FUEL TANKS	618 M ³
WATER TANKS	430 M ³
WATER MAKER	15 TONS / DAY

WHEELHOUSE	LARGE WHEELHOUSE W/ CHARTROOM AND OFFICE
RADAR	2 JRC/JMA 9822 & JMA 9303 ARPA RADARS
GPS	JRC/FURUNO/INMARSAT C & B
RADIO	GSS 720, MFHF SSB RADIO,VHF
GMDSS	A1+A2+A3
DEPTH/FISH FINDER	3 FURUNO
CURRENT METER	JRC
AUTO PILOT	TOKYO KEIKI
SEARCH LIGHTS	2
FACILITIES ON BOARD	
COMPLEMENT	147 PERSONS
CABINS	16 X 6 , 16 X 2, 19 X 1 PAX
OFFICER'S MESS	20 PERSONS
CREW MESS	25 PERSONS
MESS HALL	95 PERSONS
REC. ROOM	25 PERSONS
SURVEY ROOMS	2
OFFICES	4
WALK IN FREEZER	3
WALK IN REF	3
DECK EQUIPMENTS	
DECK AREA	FORWARD 6 X 12 METERS/AFT 23 X 10 METERS
DECK REPAIR SHOP	4 X 7 METERS
CAPSTAN	2 AFT DECK
GRUND TACKLE	2 ANCHORS, 2.2 TONS
DECK CRANE	0.95 TONS X 1 SET / 2 TONS X 1 SET
DERRICK	0.9 TONS X 2 SETS

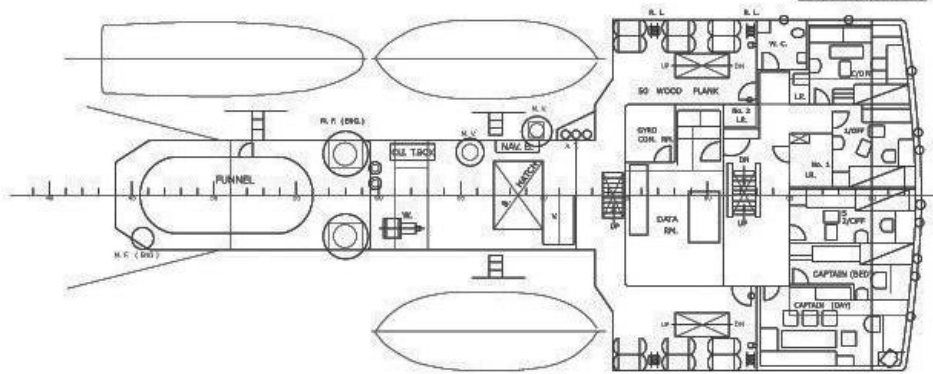
COMPASS DECK



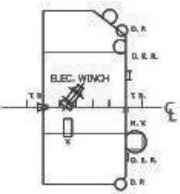
NAVIGATION BRIDGE DECK



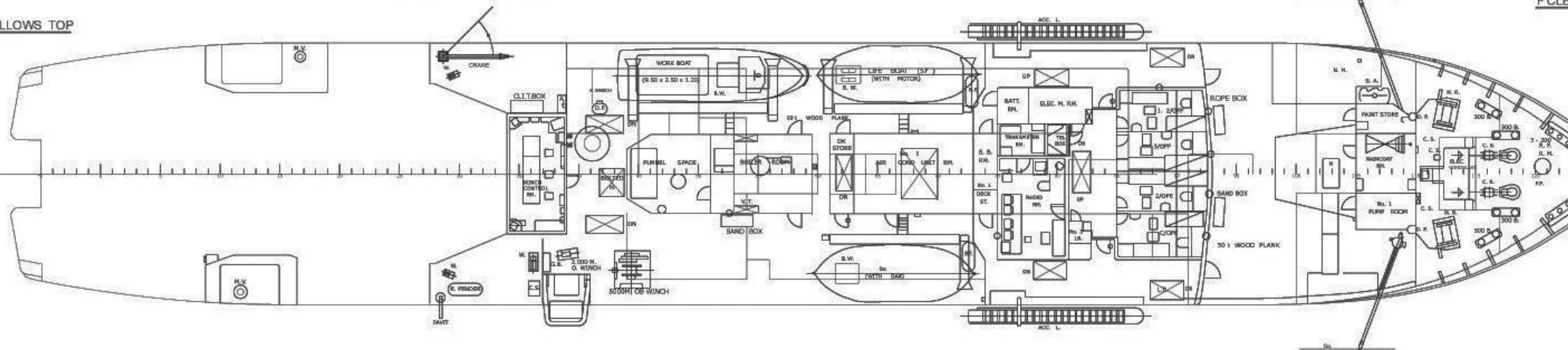
CAPTAIN DECK



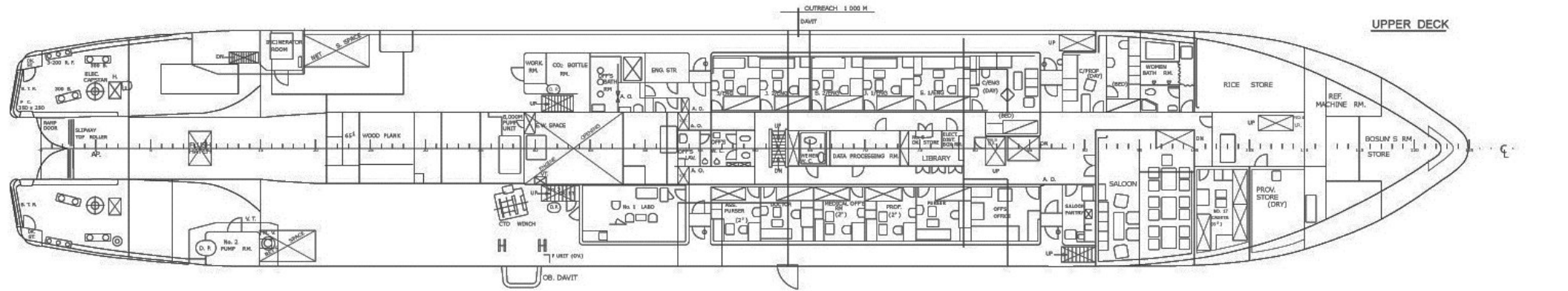
COMPANION TOP



GALLOWS TOP



FCLE



UPPER DECK

OUTREACH 1 000 M

DAVIT

BOSLIN S RM STORE

REF. MACHINE RM.

RICE STORE

WOMEN BATH RM.

C/PROP (DAY)

C/PROP (DAY)

S. 1/PROP

A. 1/PROP

S. 2/PROP

1. 2/PROP

3/PROP

ENG STR

CO2 BOTTLE RM

WORK RM

GEN. ROOM

ELC CAPTAN

3-200 R.F.

PROV. STORE (DRY)

NO. 17 QUARTER (9'3")

SALOON

SALOON PARTY

OFFS OFFICE

PROF. (2')

MEDICAL OFFS RM (2')

LOCK ROOM

ACC. PURSER (2')

NO. 1 LABO

CTD WINCH

NO. 2 PUMP RM.

V.T.

SPACE

SPACE

SPACE

SPACE

OB. DAVIT

F UNIT (DAY)

H H

WOOD PLANK

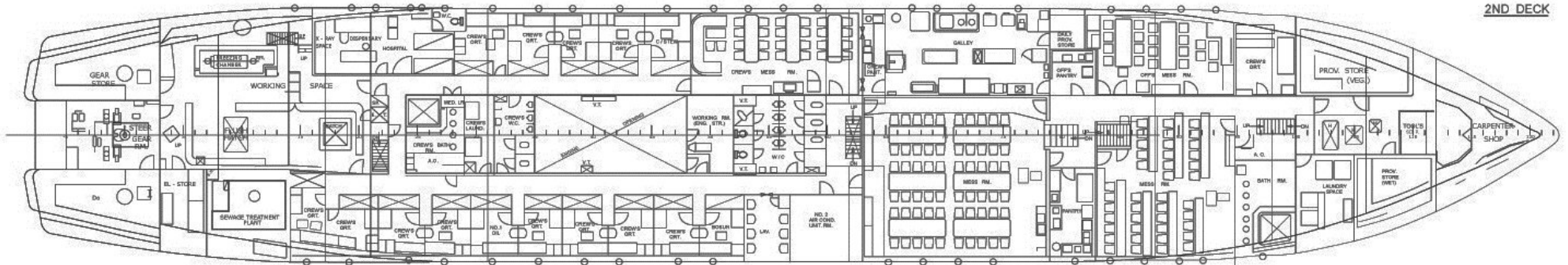
NEW SPACE

OPENING

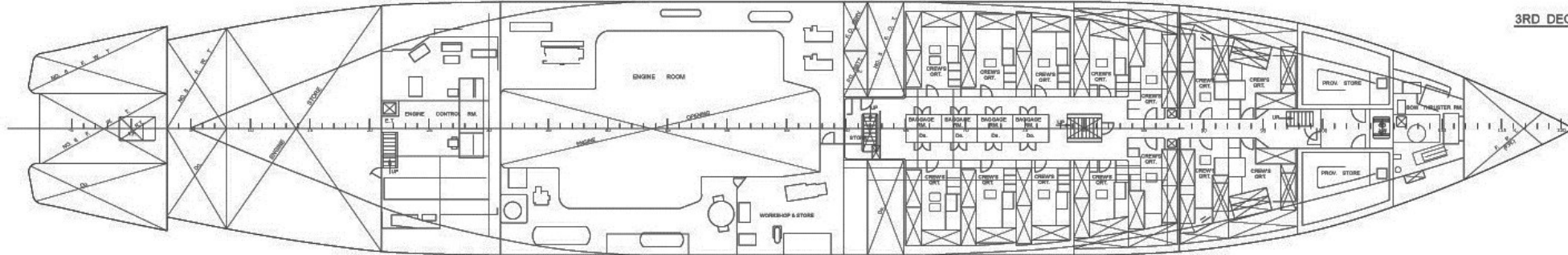
SLIPWAY TOP ROLLER

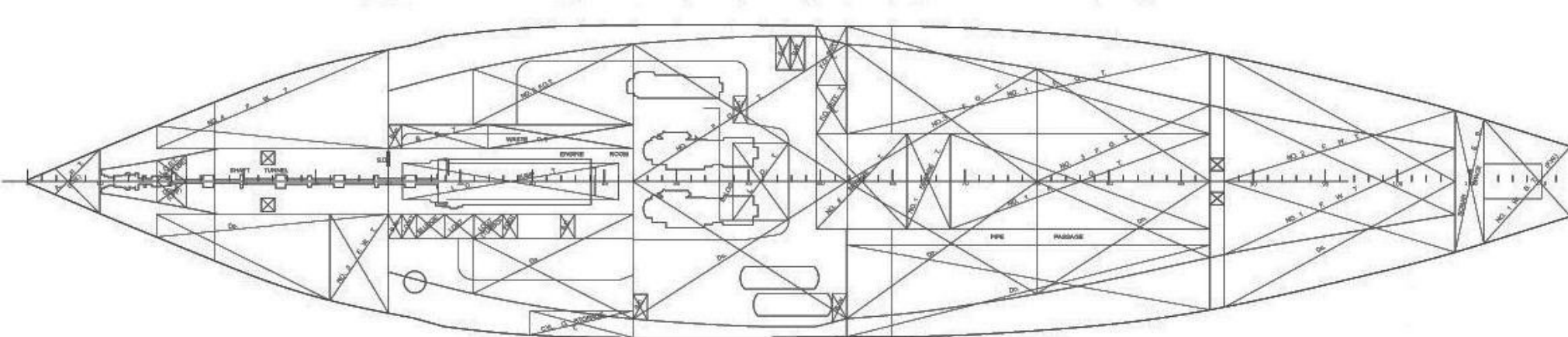
RAMP DOOR

2ND DECK



3RD DECK





TANK TOP

3