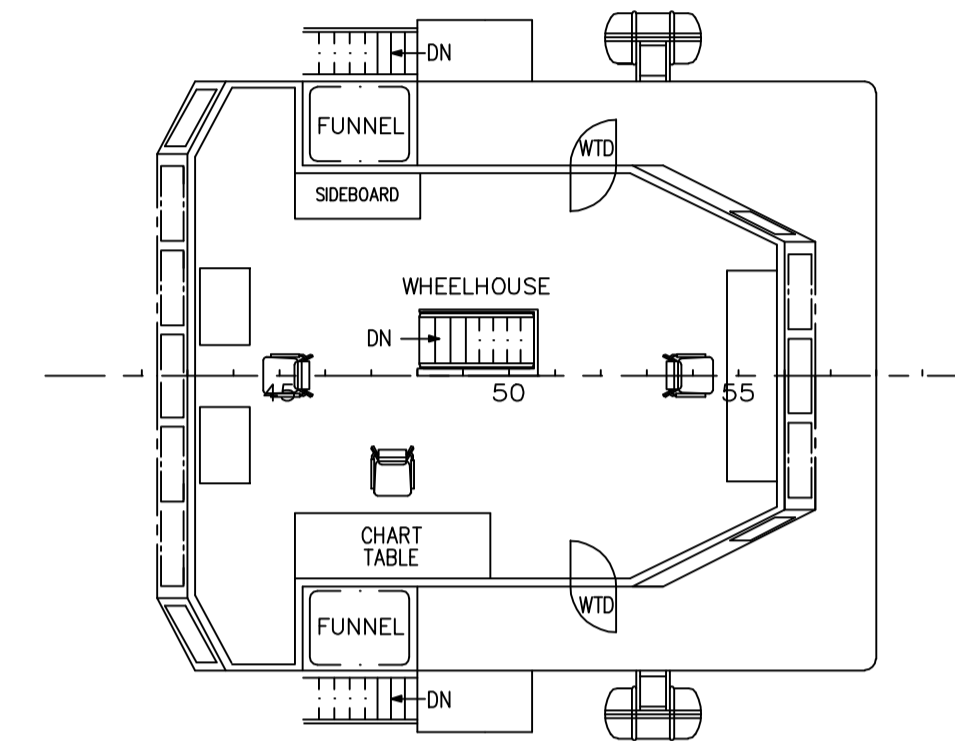
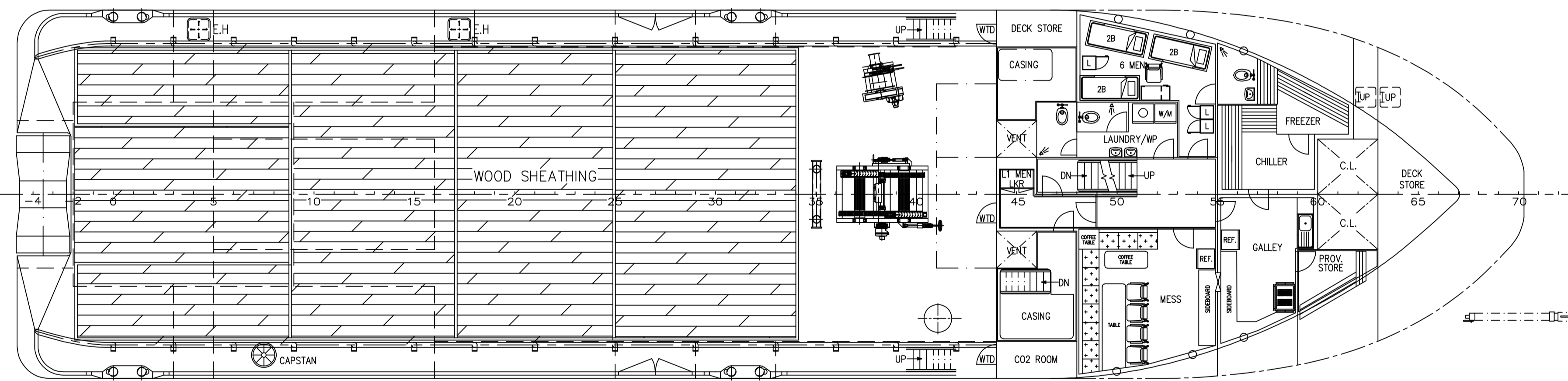


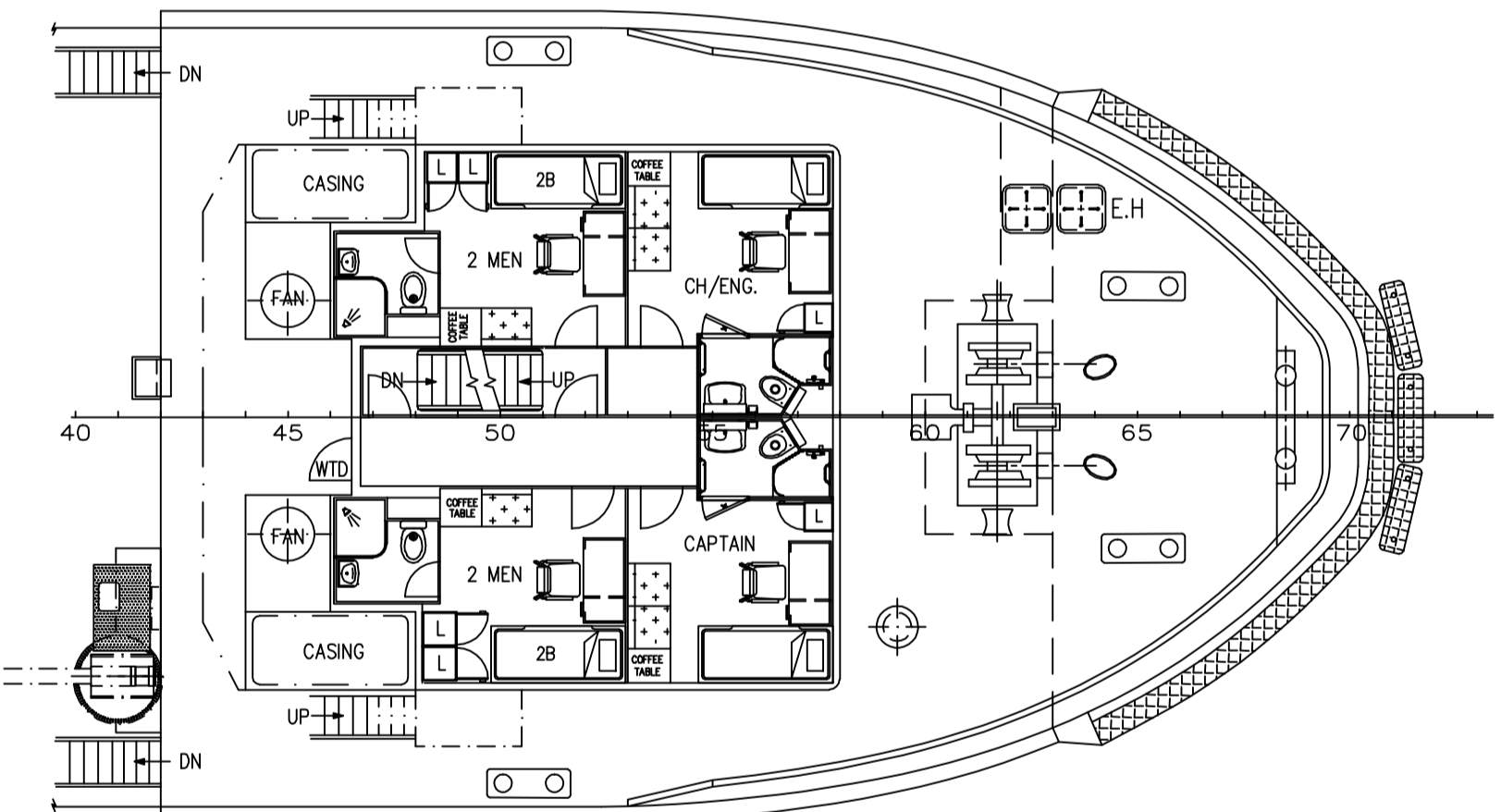
OUTBOARD PROFILE



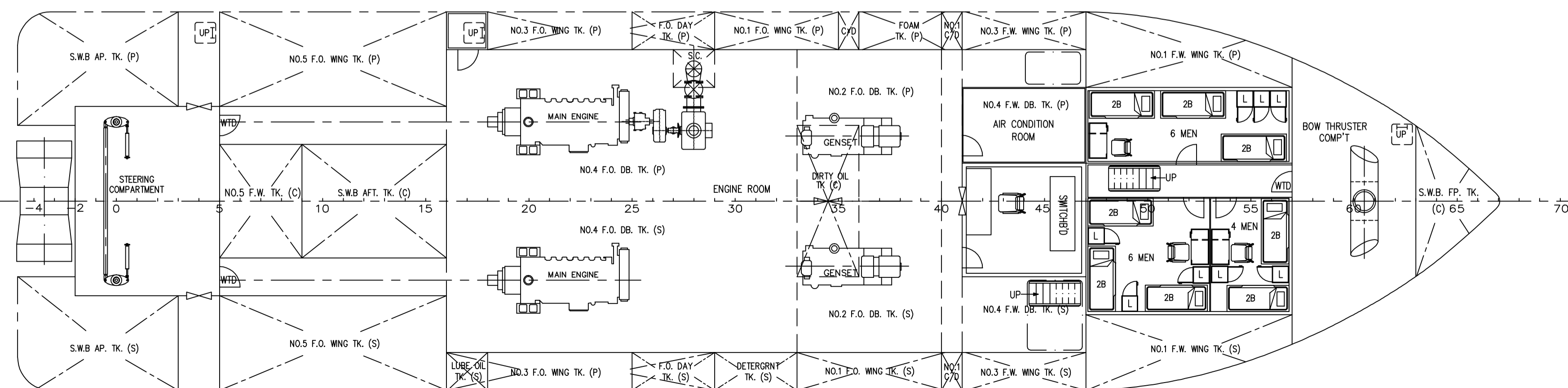
WHEELHOUSE DECK PLAN



MAIN DECK PLAN



FORECASTLE DECK



BELOW MAIN DECK PLAN

PRINCIPAL DIMENSIONS

LENGTH OVERALL	45.00 M
LENGTH WATERLINE	42.75 M
LENGTH B.P.	40.00 M
BREADTH MOULDED	11.00 M
DEPTH MOULDED	4.00 M
DESIGN DRAFT MOULDED	3.20 M

FUEL OIL	275.0 M ³ (app.)
FRESH WATER	150.0 M ³ (app.)
CLEAR DECK AREA	190.0 M ²
MAIN ENGINE	2 x 1600 BHP
SPEED (TRIALS)	12.0 KNOTS
BOLLARD PULL	40 TONS
COMPLEMENT	28 MEN

THIS DOCUMENT AND THE INFORMATION IT CONTAINS IS COPYRIGHT AND REMAINS THE PROPERTY OF KHIAM CHUAN MARINE PTE LTD. IT IS NOT TO BE COPIED IN WHOLE OR IN PART OR DISCLOSED TO ANY THIRD PARTY FOR ANY PURPOSE WHATSOEVER WITHOUT PRIOR WRITTEN CONSENT.

ITEM	DETAILS OF MODIFICATION	BY	DATE
BUILDER	PLEASANT ENGINEERING SDN. BHD.		
CONSULTANT	KHIAM CHUAN MARINE PTE LTD 15, HILLVIEW TERRACE, SINGAPORE 669226 TEL: 67753383 (6 LINES) FAX: 67753788 EMAIL: khiamchuan@kcm.com.sg		
PROJECT	45m UTILITY/SUPPORT VESSEL		
TITLE	GENERAL ARRANGEMENT		
CLASSIFICATION	HULL NO. 07/08, 12/08, 18/09 & 19/09		
DRAWN	CHECKED	SCALE	DRAWING NUMBER
ImLAl		1:100	KCM/Q315(B)-G1
26-02-09			REV.
			-